



## DISCOVER A COMMUNITY THAT FITS YOUR LIFESTYLE



Welcome to Florence Square, a unique apartment community in the heart of renewed Aurora. Designed with a flair for the dramatic, this community was built with comfort, convenience and quality in mind.

One visit to our community and you'll discover something drastically different from traditional apartment homes. Many homes in Florence Square feature oversized windows and open floor plans, providing bright and cheerful natural light during the day.



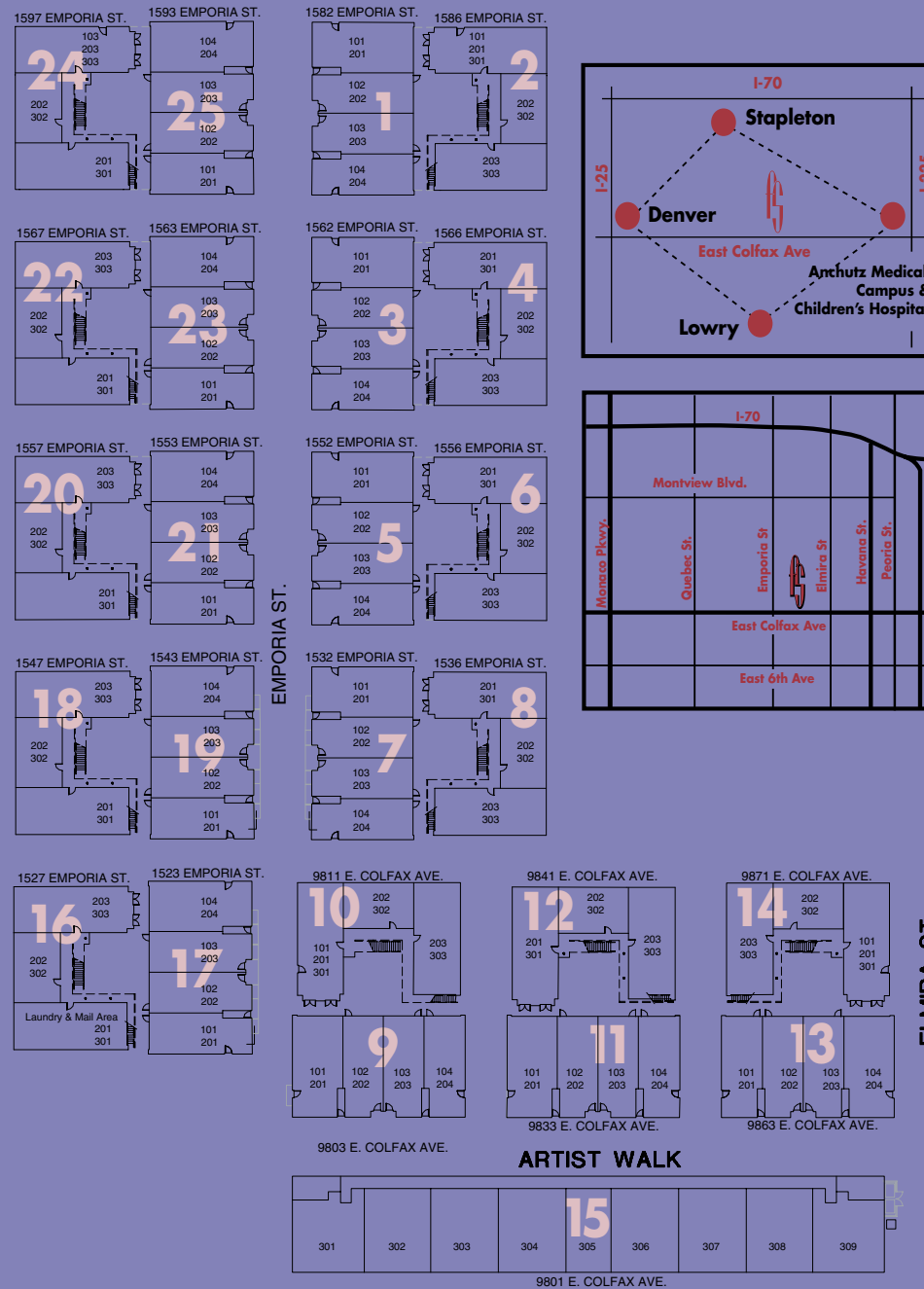
In some homes, unique touches like twelve foot ceilings are just the beginning. Big kitchens make for easy family gatherings, desk alcoves are perfect for a little homework and thoughtful design means every home has easy access to private courtyards. Our on-site fitness center and community room provide a great place for a little rest, relaxation and rejuvenation after a long day.



Close to everything you want and need in a neighborhood, including restaurants, shops and RTD bus service, Florence Square is less than a mile from Anschutz Medical Campus and the new Children's Hospital.

Come discover Florence Square, where you'll find so much more than a traditional boxy apartment. You'll find a home that fits your life!

# WELCOME HOME



**FLORENCE**  
square

9801 E. Colfax Ave. • Aurora, CO 80010  
303.340.2027 • FAX 303.340.8458  
lease.florence@echelonpg.com  
www.liveatflorescesquare.com • www.echelonrents.com



Echelon Property Group is a Colorado-owned apartment management company dedicated to providing our residents with an unsurpassed standard of living at affordable prices, understanding that resident satisfaction is paramount to our success. *Excellence at a Higher Level* isn't just a motto, it's how we operate—by consistently providing superior customer service, ensuring well-maintained common areas, promptly responding to resident requests and enforcing community policies so that every resident enjoys a high-quality living environment.





# WE HAVE EIGHT HOME STYLES TO SUIT YOUR FAMILY'S NEEDS

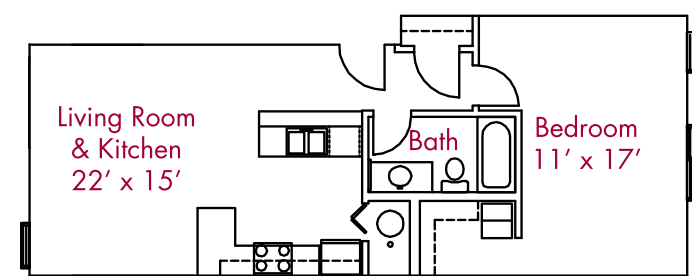
## YOUR FAMILY WILL LOVE IT HERE!

- One & Two Bedroom Apartment Homes
- Open & Bright Floor Plans
- Stylish & Contemporary Interior Touches
- Nine Foot Flat & Twelve Foot Vaulted Ceilings\*
- European Style Cabinetry
- Huge Oversized Windows
- Fully Equipped Kitchens
- Garages Available
- Family-Style Courtyards
- Washer & Dryer Hook-Ups\*
- Central Air Conditioning
- Computer Lab
- Cardio & Fitness Center
- Community Room with Pool Table
- Adjacent to Fox Theatre, Library & Two Parks
- Located in the Heart of Charming & Rejuvenated Original Aurora
- Close to Restaurants, Shops & Hospitals
- Pet Friendly
- Located on 24-Hour RTD Bus Route
- On-Site Laundry Facilities

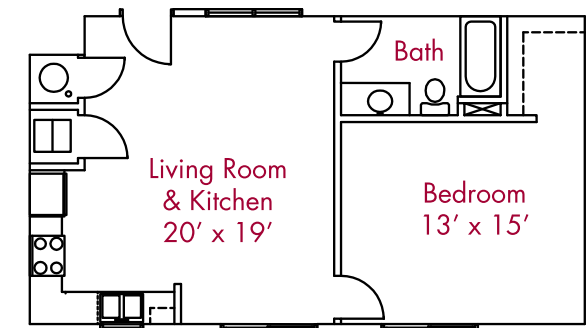


## ¡A SU FAMILIA LE ENCANTARA VIVIR AQUI!

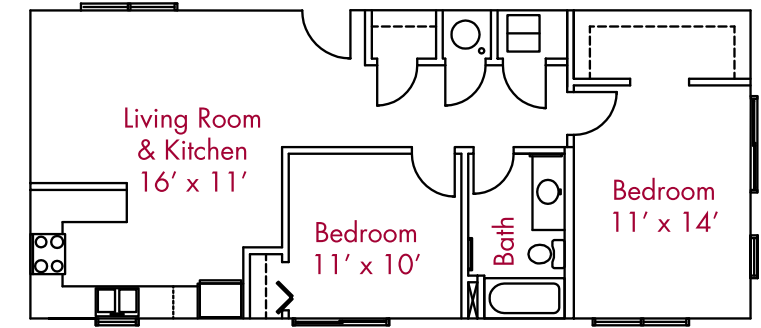
- Departamentos tipo casa de 1 & 2 recámaras
- Diseños amplios y luminosos
- Elegantes interiores de diseño contemporáneo
- Techos Planos de 9 pies y Abovedados de 12 pies de altura\*
- Gabinetes estilo europeo
- Ventanas muy grandes
- Cocinas totalmente equipadas
- Garajes disponibles
- Patios estilo familiar
- Conexiones para lavadora y secadora\*
- Aire acondicionado central
- Cuarto de gimnasio
- Cuarto comunitario con mesa de billar
- Cuarto de computadoras
- Cerca del cine Fox, la biblioteca y dos parques
- Localizado en el corazón del encantador Aurora original
- Cerca de restaurantes, tiendas y hospitales
- Animales domésticos bienvenidos
- Localizado cerca de la ruta del autobús RTD que pasa las 24 hrs.
- Centro de lavandería



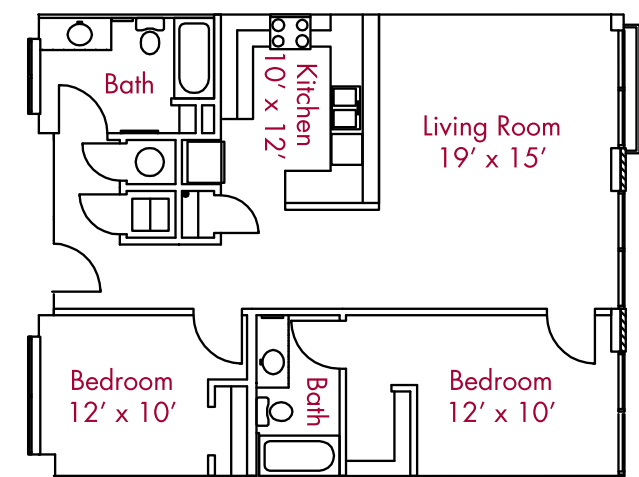
{ 1 BED • 1 BATH } 738 Sq. Ft. \*† \$



{ 1 BED • 1 BATH } 662 Sq. Ft. \*† \$



{ 2 BED • 1 BATH } 859 Sq. Ft. \*† \$



{ 2 BED • 2 BATH } 1037 Sq. Ft. \*† \$

# WELCOME TO THE PLACE YOU'LL BE PROUD TO CALL HOME.

\*\*In Select Homes. \*Square Footages Approximate.